



DODGE



**Salon DODGE & RAM  
AUTO-MOBIL**  
84-200 Wejherowo, ul. Gdańska 17  
tel. +48 725 575 008  
[www.auto-mobil.pl](http://www.auto-mobil.pl)

(edition: 02/2019)

# Contents



## Challenger 4

Lineup 6

Vehicle prices 7

Options prices 8

Body color prices 10

Standard specification 11

Body colors 12

Interior 13

Options 17

Wheels 19

Exterior 20

Index of order code 61



## Durango 22

Lineup 24

Vehicle prices 25

Options prices 26

Body color prices 28

Standard specification 29

Body colors 30

Interior 31

Options 34

Wheels 37

Exterior 38



## Charger 41

Lineup 43

Vehicle prices 44

Options prices 45

Body color prices 47

Standard specification 48

Body colors 49

Interior 50

Options 55

Wheels 57

Exterior 58



## Configure your car

A Dodge impresses with performance and design, and that's just the factory configuration.

On the following pages, you will discover everything you need to know about your model's standard specification and which variations are available to select at no extra cost.

No two people are identical. Why should it be any different for a Dodge? So style your Dodge the way you envisaged.

With our range of options, you can go beyond the standard specification and personalize your Dodge to your own preference.







DODGE CHALLENGER









## Dodge Challenger – Lineup



*SXT*

3.6L - 305hp



*GT AWD*

3.6L - 305hp



*R/T*

5.7L - 375hp



*SCAT PACK*

6.4L - 475hp



*SRT HELLCAT*

6.2L - 717hp



## Dodge Challenger – Vehicle prices

|                           | Layout           | Cylinders | Displacement                          | Max Power          | Transmission | Vehicle Rec. Retail Price<br>VAT included<br>VAT excluded |
|---------------------------|------------------|-----------|---------------------------------------|--------------------|--------------|---|
| <b>SXT</b>                | Rear-wheel drive | 6         | 3.604 cm <sup>3</sup>                 | 305 hp<br>(224 kW) | 8-speed auto | <b>195.000 PLN</b><br>158.537 PLN                         |
| <b>SXT PLUS</b>           | Rear-wheel drive | 6         | 3.604 cm <sup>3</sup>                 | 305 hp<br>(224 kW) | 8-speed auto | <b>211.000 PLN</b><br>171.545 PLN                         |
| <b>GT AWD</b>             | All-wheel drive  | 6         | 3.604 cm <sup>3</sup>                 | 305 hp<br>(224 kW) | 8-speed auto | <b>244.000 PLN</b><br>198.374 PLN                         |
| <b>GT AWD PLUS</b>        | All-wheel drive  | 6         | 3.604 cm <sup>3</sup>                 | 305 hp<br>(224 kW) | 8-speed auto | <b>249.000 PLN</b><br>202.439 PLN                         |
| <b>R/T</b>                | Rear-wheel drive | 8         | 5.654 cm <sup>3</sup>                 | 372 hp<br>(273 kW) | 8-speed auto | <b>257.000 PLN</b><br>208.943 PLN                         |
| <b>R/T SHAKER</b>         | Rear-wheel drive | 8         | 5.654 cm <sup>3</sup>                 | 372 hp<br>(273 kW) | 8-speed auto | <b>274.000 PLN</b><br>222.764 PLN                         |
| <b>SCAT PACK</b>          | Rear-wheel drive | 8         | 6.417 cm <sup>3</sup>                 | 475 hp<br>(349 kW) | 8-speed auto | <b>298.000 PLN</b><br>242.276 PLN                         |
| <b>SCAT PACK T/A</b>      | Rear-wheel drive | 8         | 6.417 cm <sup>3</sup>                 | 475 hp<br>(349 kW) | 8-speed auto | <b>312.000 PLN</b><br>253.659 PLN                         |
| <b>SCAT PACK WIDEBODY</b> | Rear-wheel drive | 8         | 6.417 cm <sup>3</sup>                 | 475 hp<br>(349 kW) | 8-speed auto | <b>336.000 PLN</b><br>273.171 PLN                         |
| <b>HELLCAT</b>            | Rear-wheel drive | 8         | 6.166 cm <sup>3</sup><br>supercharged | 717 hp<br>(527 kW) | 8-speed auto | <b>431.000 PLN</b><br>350.407 PLN                         |
| <b>HELLCAT WIDEBODY</b>   | Rear-wheel drive | 8         | 6.166 cm <sup>3</sup><br>supercharged | 717 hp<br>(527 kW) | 8-speed auto | <b>474.000 PLN</b><br>385.366 PLN                         |

All vehicle and option prices are recommended retail price excluding delivery and local fees. All prices are effective from 01/02/2019.  
The price list supersedes all previous price list. KW Auto reserves the right to adjust the prices indicated due to exchange rate variations.



# Dodge Challenger – Options prices 1/2

| Option   | Sales Code | Rec. Retail Price<br>Incl. VAT<br>Excl. VAT | SXT | SXT PLUS | GT | GT PLUS | R/T | R/T SHAKER | SCAT PACK | SCAT PACK T/A | SCAT PACK WIDE BODY | HELLCAT | HELLCAT WIDE BODY |
|--|------------|---|-----|----------|----|---------|-----|------------|-----------|---------------|---------------------|---------|-------------------|
|  |            |   |     |          |    |         |     |            |           |               |                     |         |                   |
| <b>Technology group</b>  | <b>ADG</b> | <b>9.000 PLN</b><br>7.317 PLN               | -   | O        | -  | O       | O   | O          | O         | O             | O                   | O       | O                 |
| <b>Blacktop Package</b><br>Includes black noise painted Wheels         | <b>ADX</b> | <b>5.000 PLN</b><br>4.065 PLN               | -   | O        | -  | O       | O   | -          | -         | -             | -                   | -       | -                 |
| <b>Alpine Audio Group</b><br>9 Speakers - 506-Watt Amplifier           | <b>ATL</b> | <b>7.000 PLN</b><br>5.691 PLN               | O   | O        | O  | O       | O   | O          | O         | O             | O                   | O       | O                 |
| <b>Harman Kardon Audio Group</b><br>19 speakers                        | <b>AMA</b> | <b>11.000 PLN</b><br>8.943 PLN              | O   | O        | O  | O       | O   | O          | O         | O             | O                   | O       | O                 |
| <b>Engine Block Heater</b>   | <b>NHK</b> | <b>2.000 PLN</b><br>1.626 PLN               | O   | O        | O  | O       | O   | O          | O         | O             | O                   | O       | O                 |
| <b>Sunroof</b>   | <b>GWA</b> | <b>9.000 PLN</b><br>7.317 PLN               | O   | O        | O  | O       | O   | O          | O         | O             | O                   | -       | -                 |
| <b>Sunroof</b><br>for Hellcat  | <b>GWA</b> | <b>14.000 PLN</b><br>11.382 PLN             | -   | -        | -  | -       | -   | -          | -         | -             | -                   | O       | O                 |
| <b>Laguna Leather Package</b>  | <b>AYK</b> | <b>13.000 PLN</b><br>10.569 PLN             | -   | -        | -  | -       | -   | -          | O         | O             | O                   | S       | S                 |
| <b>Alcantara Leather Package</b>                                       | <b>AJJ</b> | <b>13.000 PLN</b><br>10.569 PLN             | -   | -        | -  | -       | -   | -          | -         | -             | -                   | O       | O                 |
| <b>Seats color: black</b>  | <b>-X9</b> | <b>0 PLN</b>                                | S   | S        | S  | S       | S   | S          | S         | S             | S                   | S       | S                 |
| <b>Seats color: sepia</b><br>Request Natura leather package (code AYK) | <b>-VX</b> | <b>4.000 PLN</b><br>3.252 PLN               | -   | -        | -  | -       | -   | -          | -         | -             | -                   | O       | O                 |
| <b>Seats color: red</b><br>Request Natura leather package (code AYK)   | <b>-X6</b> | <b>4.000 PLN</b><br>3.252 PLN               | -   | -        | -  | -       | -   | -          | -         | -             | -                   | O       | O                 |

S = standard equipment, O = optional equipment, - = not available

## Dodge Challenger – Options prices 2/2

| Option                       | Sales Code | Rec. Retail Price<br>Incl. VAT<br>Excl. VAT | SXT | SXT PLUS | GT | GT PLUS | R/T | R/T SHAKER | SCAT PACK | SCAT PACK T/A | SCAT PACK WIDE BODY | HELLCAT | HELLCAT WIDE BODY |
|------------------------------|------------|---|-----|----------|----|---------|-----|------------|-----------|---------------|---------------------|---------|-------------------|
|                              |            |   |     |          |    |         |     |            |           |               |                     |         |                   |
| Red Brake Calipers           | XSP        | 4.000 PLN<br>3.252 PLN                      | -   | -        | -  | -       | -   | -          | O         | O             | O                   | S       | S                 |
| Black Brake Calipers         | XS9        | 4.000 PLN<br>3.252 PLN                      | -   | -        | -  | -       | -   | -          | -         | -             | -                   | O       | O                 |
| Gunmetal Brake Calipers      | XTM        | 4.000 PLN<br>3.252 PLN                      | -   | -        | -  | -       | -   | -          | -         | -             | -                   | O       | O                 |
| Orange Brake Calipers        | XTU        | 4.000 PLN<br>3.252 PLN                      | -   | -        | -  | -       | -   | -          | -         | -             | -                   | O       | O                 |
| Dual Gunmetal Center Stripes | M2S        | 8.000 PLN<br>6.504 PLN                      | -   | -        | -  | -       | -   | -          | -         | -             | -                   | O       | O                 |
| Dual Carbon Stripes          | M96        | 8.000 PLN<br>6.504 PLN                      | -   | -        | -  | -       | -   | -          | -         | -             | -                   | O       | O                 |
| Painted Black Satin Graphics | MEH        | 24.000 PLN<br>19.512 PLN                    | -   | -        | -  | -       | -   | -          | -         | -             | -                   | O       | O                 |
| SRT Performance Spoiler      | MXN        | 5.000 PLN<br>4.065 PLN                      | -   | -        | -  | -       | -   | -          | -         | O             | O                   | O       | O                 |
| Black Satin Hood             | MYW        | 14.000 PLN<br>11.382 PLN                    | -   | -        | -  | -       | -   | -          | -         | -             | -                   | O       | O                 |
| 275/40ZR20 BSW Perf Tires    | TN2        | 5.000 PLN<br>4.065 PLN                      | -   | -        | -  | -       | -   | -          | -         | O             | -                   | O       | -                 |
| Red Seat Belts               | CGQ        | 3.000 PLN<br>2.439 PLN                      | -   | -        | -  | -       | -   | -          | -         | -             | -                   | O       | O                 |

S = standard equipment, O = optional equipment, - = not available

# Dodge Challenger – Body colors prices

| Body colors               | Sales Code | Rec. Retail Price<br>Incl. VAT | SXT                   | SXT PLUS              | GT                    | GT PLUS               | R/T                   | R/T SHAKER            | SCAT PACK             | SCAT PACK T/A         | SCAT PACK<br>WIDEBODY | HELLCAT               | HELLCAT WIDEBODY      |
|---------------------------|------------|--------------------------------|-----------------------|-----------------------|-----------------------|-----------------------|-----------------------|-----------------------|-----------------------|-----------------------|-----------------------|-----------------------|-----------------------|
|                           |            |                                |                       |                       |                       |                       |                       |                       |                       |                       |                       |                       |                       |
| White knuckle             | PW7        | 0 PLN                          | <input type="radio"/> | <input type="radio"/> | <input type="radio"/> | <input type="radio"/> | <input type="radio"/> | <input type="radio"/> | <input type="radio"/> | <input type="radio"/> | <input type="radio"/> | <input type="radio"/> | <input type="radio"/> |
| Pitch black clear coat    | PX8        |                                |                       |                       |                       |                       |                       |                       |                       |                       |                       |                       |                       |
| Go mango                  | PVP        | 3.000 PLN<br>2.439 PLN         |                       |                       |                       |                       |                       |                       |                       |                       |                       |                       |                       |
| Maximum steel             | PAR        |                                |                       |                       |                       |                       |                       |                       |                       |                       |                       |                       |                       |
| TorRed                    | PR4        |                                |                       |                       |                       |                       |                       |                       |                       |                       |                       |                       |                       |
| Indigo blue               | PBM        |                                |                       |                       |                       |                       |                       |                       |                       |                       |                       |                       |                       |
| F8 green                  | PFQ        |                                | <input type="radio"/> | <input type="radio"/> | <input type="radio"/> | <input type="radio"/> | <input type="radio"/> | <input type="radio"/> | <input type="radio"/> | <input type="radio"/> | <input type="radio"/> | <input type="radio"/> | <input type="radio"/> |
| B5 Blue pearl coat        | PQD        |                                |                       |                       |                       |                       |                       |                       |                       |                       |                       |                       |                       |
| Destroyer grey clear coat | PDN        |                                |                       |                       |                       |                       |                       |                       |                       |                       |                       |                       |                       |
| Triple nickel clear coat  | PSE        |                                |                       |                       |                       |                       |                       |                       |                       |                       |                       |                       |                       |
| Sublime pearl coat        | PFB        |                                |                       |                       |                       |                       |                       |                       |                       |                       |                       |                       |                       |
| Granite pearl coat        | PAU        | 5.000 PLN<br>4.065 PLN         | <input type="radio"/> | <input type="radio"/> | <input type="radio"/> | <input type="radio"/> | <input type="radio"/> | <input type="radio"/> | <input type="radio"/> | <input type="radio"/> | <input type="radio"/> | <input type="radio"/> | <input type="radio"/> |
| Octane pearl coat         | PRV        |                                |                       |                       |                       |                       |                       |                       |                       |                       |                       |                       |                       |
| Plum crazy pearl coat     | PHG        |                                |                       |                       |                       |                       |                       |                       |                       |                       |                       |                       |                       |



Pitch Black – PX8



Granite – PAU



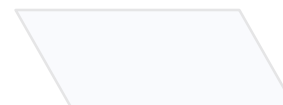
Maximum Steel – PAR



Destroyer Grey – PDN



Triple Nickel – PSE



White knuckle – PW7



Plum crazy - PGH



Sublime – PFB



F8 green – PFQ



Octane Red – PRV



TorRed – PR4



Go mango – PVP



Indigo blue – PBM



B5 blue - PQD





# Dodge Challenger – Standard specification

| Standard specification               | Sales Code | SXT | SXT PLUS | GT | GT PLUS | R/T | R/T SHAKER | SCAT PACK | SCAT PACK T/A | SCAT PACK WIDEBODY | HELLCAT | HELLCAT WIDEBODY |
|--------------------------------------|------------|-----|----------|----|---------|-----|------------|-----------|---------------|--------------------|---------|------------------|
| Plus package                         | AAY        | -   | S        | -  | S       | S   | S          | S         | S             | S                  | S       | S                |
| Driver convenience group             | AJV        | -   | S        | -  | S       | S   | S          | S         | S             | S                  | S       | S                |
| 8.4-inch Uconnect 4 with NAV         | UAQ        | -   | S        | -  | S       | S   | S          | S         | S             | S                  | S       | S                |
| Ventilated seat                      | CAJ        | -   | S        | -  | S       | S   | S          | S         | S             | S                  | S       | S                |
| Blindspot                            | XAN        | -   | S        | -  | S       | S   | S          | S         | S             | S                  | S       | S                |
| Parksense rear assist                | XAA        | -   | S        | S  | S       | S   | S          | S         | S             | S                  | S       | S                |
| Power Tilt/Telescope Steering Column | SUB        | -   | S        | -  | S       | S   | S          | S         | S             | S                  | S       | S                |
| Adaptive Damping Suspension          | SMC        | -   | -        | -  | -       | -   | -          | -         | -             | S                  | S       | S                |
| 6 Premium Alpine Speakers            | RCJ        | S   | S        | S  | S       | S   | S          | S         | S             | S                  | S       | S                |
| Heated steering wheel                | NHS        | -   | S        | -  | S       | S   | S          | S         | S             | S                  | S       | S                |
| Front fog lamps                      | LNJ        | -   | S        | S  | S       | S   | S          | S         | S             | S                  | S       | 6                |
| Heated Front Seats                   | JPM        | -   | S        | -  | S       | S   | S          | S         | S             | S                  | S       | S                |
| Power 6-Way Driver Seat              | JPS        | S   | S        | S  | S       | S   | S          | S         | S             | S                  | S       | S                |
| Power 4-Way Driver Lumbar Adjust     | JPU        | S   | S        | S  | S       | S   | S          | S         | S             | S                  | S       | S                |
| Air Cond ATC w/Dual Zone Control     | HAF        | S   | S        | S  | S       | S   | S          | S         | S             | S                  | S       | S                |
| Remote Proximity Keyless Entry       | GXD        | S   | S        | S  | S       | S   | S          | S         | S             | S                  | S       | S                |
| 305/35ZR20 (107Y) AS Perf Tires      | TYS        | -   | -        | -  | -       | -   | -          | -         | -             | S                  | -       | S                |
| Launch assist                        | XZU        | -   | -        | -  | -       | -   | -          | -         | S             | S                  | S       | S                |

S = standard equipment, O = optional equipment, - = not available

## Dodge Challenger - Body color



Indigo blue – PBM



F8 Green – PFQ



Go mango – PVP



Triple nickel clear coat – PSE



Destroyer grey clear coat – PDN



TorRed clear coat – PR3



White knuckle clear coat – PW7



Pitch black clear coat – PX8



Maximum steel metallic clear coat – PAR



Granite pearl coat – PAU



Plum Crazy pearl coat – PHG



B5 blue pearl coat – PQD



Octane red pearl coat - PRV



Sublime pearl coat – PFB

## Dodge Challenger – Interior 1/4



SXT / GT / R/T  
Interior



## Dodge Challenger – Interior 2/4



Scat pack / Hellcat  
Interior

## Dodge Challenger – Interior 3/4



Seats color: black  
Sales Code: -X9



Seats color: sepia (required Laguna leather sales code AYK)  
Sales Code: -VX



Seats color: red (required Laguna leather sales code AYK & Red seat options CEJ)  
Sales Code: -X6



Red seat belt  
Sales Code: CGQ

## Dodge Challenger – Interior 4/4



SXT Plus



R/T



Scat pack



Hellcat



Hellcat Alcantara package  
Sales code: AJJ



Hellcat Natura leather package  
Sales code: AYK

## Dodge Challenger – Options



### Blacktop package

Sales Code: ADX

Including: Black fuel filler door, black grille with bezel, front fog lamps, leather steering wheel, black noise painted wheels



### Shaker Package

Sales code: AZS (included in R/T SHAKER)

Including: black fuel filler door, black grille with bezel, Mopar Shaker hood, Mopar Shaker intake, rear black spoiler



### T/A package

Sales code: ALE (included in Scat Pack T/A)

Including: 20x9.5 forged painted alu wheels, black fuel filler door, black grille with bezel, hood scoop, T/A bodyside graphic



### Widebody Package

Including: 20x11 Devil's rim alu wheels, 305/35ZR20 (107Y) performance tyres, widebody competition suspension, widebody fender flares



### Technology group

Sales code: ADG

Including: adaptive speed control, auto high beam headlamp control, forward collision warning, rain sensitive wipers



### Plus package – driver convenience group

Sales code: AAY – AJV

Including: front fog lamps, heated front seats, heated steering wheels, parksense rear, power tilt/telescope steering column, garage door opener, ventilated front seat



## Dodge Challenger – Options



Painted Black satin graphics hood  
Sales Code: MEH



SRT® Performance Spoiler  
Sales code: MXN



Black satin hood  
Sales code: MYW

Satin paint is a distinctive exterior treatment that gives your Challenger SRT® a distinctive appearance. Satin finishes are different from other automotive paints and need special care to maintain their appearance. Unlike a typical high gloss clear-coat, damage to the satin coating (such as scratches or wear from aggressive cleaning) cannot be polished or buffed out. Once an area is damaged or becomes shiny, the "flat" appearance cannot be restored. Be sure to follow the manufacturer's recommendations conveniently located on a customer Tips card located with your User Guide Kit in your glove box."



# Dodge Challenger – Wheels



SXT  
18-inch Satin Carbon Aluminum Wheels  
Sales code: WK1



SXT Plus  
20x8-inch Granite Crystal Aluminum Wheels  
Sales code: WHB



GT & GT Plus  
19x7.5-inch Painted w/ dark pockets wheels  
Sales code: WS1



GT & GT Plus with blacktop package  
19-Inch x 7.5-Inch Black Noise Painted Wheels  
Sales code: WS6



R/T & R/T Shaker  
20x8-inch Satin Carbon Painted Wheels  
Sales code: WPZ



Scat Pack  
20x9-inch Black Noise Wheels  
Sales code: WRW



Scat Pack T/A  
20x9.5-inch Forged Painted Alu Wheels  
Sales code: WRV



SXT, SXT plus & R/T with blacktop package  
20x8-inch Black Noise Painted Wheels  
Sales code: WRE



Hellcat  
20X9.5-inch SRT LowGloss Black Perf Wheels  
Sales code: WEB



Scat Pack & Hellcat Widebody  
20X11-inch Devil's Rim Aluminum Wheels  
Sales code: WSC

## Dodge Challenger – Exterior



Challenger SRT Hellcat







DODGE DURANGO







## Dodge Durango – Lineup



*R/T*

5.7L - 360hp



*SRT*

6.4L - 475hp



## Dodge Durango – Vehicle prices

|            | Layout          | Cylinders | Displacement          | Max Power          | Transmission | Vehicle Rec. Retail Price<br>VAT included<br>VAT excluded |
|------------|-----------------|-----------|-----------------------|--------------------|--------------|---|
| <b>R/T</b> | All-wheel drive | 8         | 5.654 cm <sup>3</sup> | 360 hp<br>(264 kW) | 8-speed auto | <b>276.000 PLN</b><br>224.390 PLN                         |
| <b>SRT</b> | All-wheel drive | 8         | 6.417 cm <sup>3</sup> | 475 hp<br>(349 kW) | 8-speed auto | <b>412.000 PLN</b><br>334.959 PLN                         |

All vehicle and option prices are recommended retail price excluding delivery and local fees. All prices are effective from 01/02/2019.  
The price list supersedes all previous price list. KW Auto reserves the right to adjust the prices indicated due to exchange rate variations

## Dodge Durango – Option prices 1/2

| Option   | Sales Code | Rec. Retail Price        | R/T | SRT |
|--|------------|--------------------------|-----|-----|
|  |            | Incl. VAT<br>Excl. VAT   |     |     |
| Technology group   | ADG        | 17.000 PLN<br>13.821 PLN | O   | O   |
| Blacktop Package   | ADX        | 5.000 PLN<br>4.065 PLN   | O   | -   |
| Rear DVD Entertainment Center  | AEK        | 14.000 PLN<br>11.382 PLN | O   | O   |
| Trailer tow group IV   | AHX        | 7.000 PLN<br>5.691 PLN   | O   | O   |
| Brass monkey appearance package  | AXM        | 5.000 PLN<br>4.065 PLN   | O   | O   |
| Cargo plus group<br>Roof rails   | AZ2        | 3.000 PLN<br>2.439 PLN   | O   | O   |
| 2nd row fold/tumble captain chairs<br>6 passenger seating                              | CFU        | 8.000 PLN<br>6.504 PLN   | O   | S   |
| 2nd Row Console w/Armrest & Storage  | CVR        | 5.000 PLN<br>4.065 PLN   | O   | -   |
| Power Sunroof  | GWA        | 10.000 PLN<br>8.130 PLN  | O   | O   |
| Leather wrapped dashboard  | JEK        | 8.000 PLN<br>6.504 PLN   | O   | -   |
| SRT interior appearance group<br>Leather wrapped dashboard and carbon<br>fiber accents | AZF        | 18.000 PLN<br>14.634 PLN | -   | O   |

S = standard equipment, O = optional equipment, - = not available



## Dodge Durango – Option prices 2/2

| Option  | Sales Code | Rec. Retail Price |           | R/T | SRT |
|---|------------|-------------------|-----------|-----|-----|
|   |            | Incl. VAT         | Excl. VAT |     |     |
| <b>Engine Block Heater</b>  | NHK        | <b>2.000 PLN</b>  | 1.626 PLN | O   | O   |
| <b>Harman Kardon Audio Group</b><br>19 speakers                   | RCA        | <b>8.000 PLN</b>  | 6.504 PLN | O   | O   |
| <b>Single disc remote CD player</b>                               | RH1        | <b>2.000 PLN</b>  | 1.626 PLN | O   | O   |
| <b>20x10-inch multi vapor wheels</b>                              | WRS        | <b>5.000 PLN</b>  | 4.065 PLN | -   | O   |
| <b>Blind spot monitoring system</b>                               | XAN        | <b>3.000 PLN</b>  | 2.439 PLN | O   | O   |
| <b>Real carbon fiber interior accents</b>                         | XSQ        | <b>8.000 PLN</b>  | 6.504 PLN | O   | O   |
| <b>Lightweight package</b><br>5 passenger seating                 | AMU        | <b>3.000 PLN</b>  | 2.439 PLN | -   | O   |
| <b>Luxury leather trimmed bucket seats</b>                        | *ML        | <b>5.000 PLN</b>  | 4.065 PLN | O   | -   |
| <b>High performance Laguna leather red seats</b>                  | *JB        | <b>11.000 PLN</b> | 8.943 PLN | -   | O   |
| <b>Seats color: black</b>   | -X9        | <b>0 PLN</b>      |           | S   | S   |
| <b>Seats color: sepia</b><br>Required leather seat (code *ML)     | -VX        | <b>0 PLN</b>      |           | O   | -   |
| <b>Seats color: red</b><br>Required leather seat (code *ML & *JB) | -VR<br>-X9 | <b>0 PLN</b>      |           | O   | O   |

\* Consider Extra cost related to \*ML & \*JB  
S = standard equipment, O = optional equipment, - = not available

## Dodge Durango – Body color prices

| Body colors    | Sales Code | Rec. Retail Price             | R/T | SRT |
|----------------|------------|-------------------------------|-----|-----|
|                |            | Incl. VAT<br>Excl. VAT        |     |     |
| White knuckle  | PW7        | <b>0 PLN</b><br>0 PLN         | ○   | ○   |
| Granite        | PAU        | <b>4.000 PLN</b><br>3.252 PLN | ○   | ○   |
| Destroyer grey | PDN        |                               |     |     |
| Billet silver  | PSC        |                               |     |     |
| Pitch black    | PX8        |                               |     |     |
| Reactor blue   | PBF        |                               |     |     |
| F8 green       | PFQ        |                               |     |     |
| Octane red     | PRV        |                               |     |     |
| Redline        | PRM        |                               |     |     |
| Ivory tricoat  | PWD        | <b>5.000 PLN</b><br>4.065 PLN | ○   | ○   |



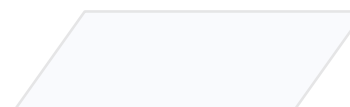
Granite – PAU



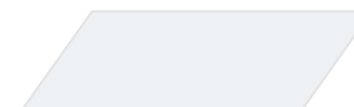
Destroyer Grey – PDN



Billet Silver – PSC



White knuckle – PW7



Ivory tricoat – PWD



Pitch Black – PX8



Reactor blue – PBF



F8 green – PFQ



Octane Red – PRV



Redline – PRM

## Dodge Durango – Standard specification

| Equipment (1/2)                      | Sales Code | R/T | SRT |
|--------------------------------------|------------|-----|-----|
| Quadra-Trac Active On Demand 4WD     | <b>DHB</b> | -   | S   |
| 8.4-inch Uconnect 4C with NAV        | <b>UAQ</b> | S   | S   |
| Parksense Ft/Rr Park Assist w/Stop   | <b>XH4</b> | S   | S   |
| ParkView Rear Back-up Camera         | <b>XAC</b> | S   | S   |
| Premium fog lamps                    | <b>LTE</b> | S   | S   |
| Pwr 8-Way Drvr Mem 8-Way Pass Seats  | <b>JT2</b> | S   | S   |
| Pwr Driver/Pass 4-Way Lumbar Adjust  | <b>JRN</b> | S   | S   |
| ATC w/3 Zone Temp Control            | <b>HAH</b> | S   | S   |
| Rain Sensitive Windshield Wipers     | <b>JHC</b> | S   | S   |
| Rear Air Conditioning w/Heater       | <b>HBB</b> | S   | S   |
| Rear Load Leveling Suspension        | <b>SES</b> | S   | S   |
| Rear View Auto Dim Mirror            | <b>GNK</b> | S   | S   |
| Remote Proximity Keyless Entry       | <b>GXD</b> | S   | S   |
| Security Alarm                       | <b>LSA</b> | S   | S   |
| Apple CarPlay                        | <b>RFP</b> | S   | S   |
| Google AndroidAuto                   | <b>RF5</b> | S   | S   |
| 6 Passenger Seating                  | <b>CYM</b> | O   | S   |
| 7 passenger seating                  | <b>CYE</b> | S   | -   |
| 9 alpine amplifies speaker w/sub     | <b>RC3</b> | S   | S   |
| 506 Watt amplifier                   | <b>RFD</b> | S   | S   |
| High perform suspension              | <b>SDX</b> | S   | S   |
| Adaptive damping                     | <b>SMC</b> | -   | S   |
| 2nd Row Mini Console w/Cupholders    | <b>CUM</b> | O   | S   |
| 2nd Row Seat Mounted Inboard A/Rests | <b>CSL</b> | O   | S   |

| Equipment (2/2)                        | Sales Code | R/T | SRT |
|--|------------|-----|-----|
| Auto high beam headlamp control        | <b>LMS</b> | S   | S   |
| Automatic headlamps                    | <b>LMG</b> | S   | S   |
| Auto Dim Exterior Driver Mirror        | <b>GNZ</b> | S   | S   |
| Remote Start System                    | <b>XBM</b> | S   | S   |
| LED Daytime Running Headlamps          | <b>LMZ</b> | S   | S   |
| Power liftgate                         | <b>JRC</b> | S   | S   |
| Power 6X9 Multi-Func F/Away Mirrors    | <b>GUN</b> | S   | S   |
| Sport mode                             | <b>XG8</b> | S   | S   |
| Sport suspension                       | <b>SDE</b> | S   | S   |
| Steering wheel mounted audio controls  | <b>RDZ</b> | S   | S   |
| Steering Wheel Mounted Shift Control   | <b>XBQ</b> | S   | S   |
| Supp. Side Curtain All Rows Air Bags   | <b>CJ5</b> | S   | S   |
| Supplemental Frt Seat Side Air Bags    | <b>CJ1</b> | S   | S   |
| Supplemental Side Air Bags             | <b>CGS</b> | S   | S   |
| Driver Inflatable Knee-Bolster Air Bag | <b>CG3</b> | S   | S   |
| Tinted Windshield Glass                | <b>GBB</b> | S   | S   |
| Tire Pressure Monitoring Display       | <b>XGM</b> | S   | S   |
| Trailer Sway Damping                   | <b>BNT</b> | S   | S   |
| Universal Garage Door Opener           | <b>XGD</b> | S   | S   |
| Exterior Mirrors w/Heating Element     | <b>NHJ</b> | S   | S   |
| Heated front seat                      | <b>JPM</b> | S   | S   |
| Heated second row seats                | <b>JPZ</b> | S   | S   |
| Heated steering wheel                  | <b>NHS</b> | S   | S   |

S = standard equipment, O = optional equipment, - = not available

## Dodge Durango – Body color



White knuckle – PW7



Ivory white tricoat – PWD



Destroyer grey clear coat – PDN



Billet silver - PSC



Granite crystal – PAU



Pitch black clear coat – PX8



Delmonico red\* – PRV



Redline – PRM



F8 Green – PFQ



Reactor blue\* – PBF

Cars are equipped with blacktop package excluding colors indicated with (\*) where this option is not available – sales code ADX



## Dodge Durango – Interior R/T



Seats color: black  
Material: Leather-Trimmed Bucket Seats with Suede Inserts  
Sales Code: \*ZL – X9



Seats color: black  
Material: Luxury Leather-Trimmed Bucket Seats  
Sales Code: \*ML –X9. Including: Tungsten Interior Accent Stitching, Ventilated Front Seats



Seats color: sepia  
Material: Luxury Leather-Trimmed Bucket Seats  
Sales Code: \*ML -VX  
Including: Tungsten Interior Accent Stitching, Ventilated Front Seats



Seats color: red  
Material: Luxury Leather-Trimmed Bucket Seats  
Sales Code: \*ML -XR  
Including: Tungsten Interior Accent Stitching, Ventilated Front Seats

## Dodge Durango – Interior SRT



Seats color: black  
Material: Leather-Trimmed Bucket Seats with Suede Inserts  
Sales Code: \*PL – X9  
Including: heated and ventilated front seats



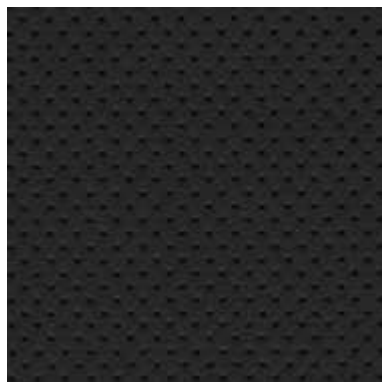
Seats color: red  
Material: Demonic Red Laguna Leather-Trim Performance Seats  
Sales Code: \*JB –X9  
Including: heated and vventilated front seats

## Dodge Durango – Interior

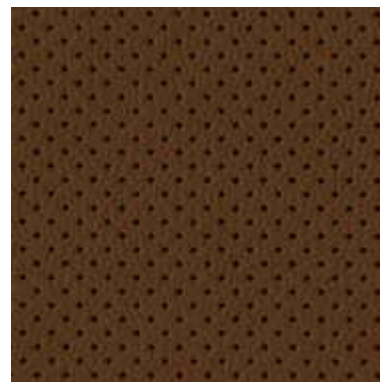
### R/T



Seats color: black  
Material: Leather-Trimmed Bucket Seats with Suede Inserts  
Sales Code: \*ZL – X9



Seats color: black  
Material: Luxury Leather-Trimmed Bucket Seats  
Sales Code: \*ML –X9  
Including: Tungsten Interior Accent Stitching, Ventilated Front Seats



Seats color: sepia  
Material: Luxury Leather-Trimmed Bucket Seats  
Sales Code: \*ML –VX  
Including: Tungsten Interior Accent Stitching, Ventilated Front Seats

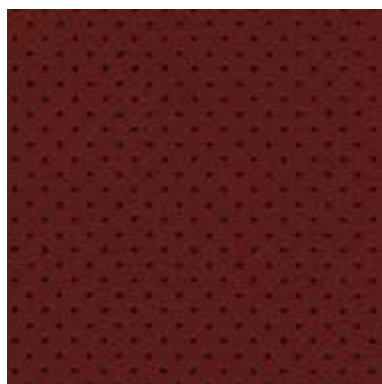


Seats color: red  
Material: Luxury Leather-Trimmed Bucket Seats  
Sales Code: \*ML –XR  
Including: Tungsten Interior Accent Stitching, Ventilated Front Seats

### SRT



Seats color: black  
Material: Leather-Trimmed Bucket Seats with Suede Inserts  
Sales Code: \*PL – X9  
Including: heated and ventilated front seats



Seats color: red  
Material: Demonic Red Laguna Leather-Trim Performance Seats  
Sales Code: \*JB –X9  
Including: heated and ventilated front seats

## Dodge Durango – Options 1/3



**Blacktop package**  
Sales Code: ADX  
Including: 20x8-Inch High Gloss Black Aluminum Wheels, Gloss Black Badges, Gloss Black Exterior Mirrors



**Brass monkey appearance package**  
Sales code: AXM  
Including: 20x8-Inch Brass Monkey Bronze Wheels, Gloss Black Badges



**Cargo plus group**  
Sales code: AZ2  
Including: Black Roof Rails, Cargo Compartment Cover



**Technology group**  
Sales code: ADG  
Including: Adaptive Cruise Control with Stop, Advanced Brake Assist, Full-Speed Forward Collision Warning Plus, Lane Departure Warning Plus



**Hand-Wrapped Dashboard with Live Stitch**  
Sales code: JEK  
Including: A hand-wrapped instrument panel with live accent stitching adds refinement to the interior cabin



**Real Carbon Fiber Interior Accents**  
Sales code: XSQ  
Including: This vehicle can be decked out with genuine carbon fiber interior trim



## Dodge Durango – Options 2/3



Trailer tow group IV  
Sales Code: AHX  
Including: 7-and 4-Pin Wiring Harness, Class IV Receiver-Hitch, Full Size Spare Tire, Heavy-Duty Engine Cooling, Rear Load Leveling Suspension, Trailer Brake Control



Rear DVD Entertainment Center  
Sales code: AEK  
Including: Blu-Ray Compatible Dual Screen Video, Rear Seat Video System



Power Sunroof  
Sales code: GWA



Second-Row Fold / Tumble Captain Chairs  
Sales code: CFU (standard for SRT)  
Including: 6 passenger seating, second-row seat mounted inboard armrest, second row mini console with cup holders



Second-Row Console with Armrest and Storage  
Sales code: CVR  
Including: 12-Volt Auxiliary Power Outlet in Console, 1 USB Charging Port in Console, Third-Row Full-Console Floor Mat and Illuminated Rear Cup Holders



Red seat belts  
Sales code: CGQ

## Dodge Durango – Options 3/3



SRT interior appearance group  
Sales Code: AZF  
Including: premium wrapped I/P bezel, real carbon fiber interior accents



Lightweight Performance Package  
Sales code: AMU  
Including: third row delete



Engine block heater  
Sales code: NHK



High performance brake  
Sales code: BNN



19 speakers Harman Kardon with 825 watt amplifier  
Sales code: RCA

## Dodge Challenger – Wheels

### R/T



Standard R/T  
20x10-inch Satin carbon Wheels  
Sales code: WBK



Blacktop package  
20x10-inch High gloss black Aluminum Wheels  
Sales code: WHB



Brass Monkey package  
20x10-inch Brass Monkey bronze Wheels  
Sales code: WDE

### SRT



Standard SRT  
20x10-inch Black noise Wheels  
Sales code: WPF



Optional SRT  
20x10-inch Matte vapor Wheels  
Sales code: WRS



SRT Brass Monkey package  
20x10-inch Matte vapor Wheels  
Sales code: WRS

## Dodge Durango – Exterior

R/T



SRT











DODGE CHARGER









## Dodge Charger – Lineup



*SXT AWD*

3.6L - 292hp



*GT*

3.6L - 300hp



*R/T*

5.7L - 370hp



*SRT HELLCAT*

6.2L - 707hp



## Dodge Charger – Vehicle prices

|                    | Layout           | Cylinders | Displacement                          | Max Power          | Transmission | Vehicle Rec. Retail Price<br>VAT included<br>VAT excluded |
|--------------------|------------------|-----------|---------------------------------------|--------------------|--------------|---|
| <b>GT</b>          | Rear-wheel drive | 6         | 3.604 cm <sup>3</sup>                 | 300 hp<br>(221 kW) | 8-speed auto | <b>255.000 PLN</b><br>207.217 PLN                         |
| <b>SXT AWD</b>     | All-wheel drive  | 6         | 3.604 cm <sup>3</sup>                 | 292 hp<br>(214 kW) | 8-speed auto | <b>271.000 PLN</b><br>220.325 PLN                         |
| <b>R/T</b>         | Rear-wheel drive | 8         | 5.654 cm <sup>3</sup>                 | 370 hp<br>(272 kW) | 8-speed auto | <b>252.000 PLN</b><br>204.878 PLN                         |
| <b>R/T DAYTONA</b> | Rear-wheel drive | 8         | 5.654 cm <sup>3</sup>                 | 370 hp<br>(272 kW) | 8-speed auto | <b>266.000 PLN</b><br>216.260 PLN                         |
| <b>HELLCAT</b>     | Rear-wheel drive | 8         | 6.166 cm <sup>3</sup><br>supercharged | 707 hp<br>(520 kW) | 8-speed auto | <b>444.000 PLN</b><br>360.976 PLN                         |

All vehicle and option prices are recommended retail price excluding delivery and local fees. All prices are effective from 01/02/2019.  
The price list supersedes all previous price list. KW Auto reserves the right to adjust the prices indicated due to exchange rate variations

## Dodge Charger – Option prices 1/2

| Option   | Sales Code | Rec. Retail Price<br>Incl. VAT<br>Excl. VAT | GT | SXT AWD | R/T | R/T DAYOTNA | HELLCAT |
|--|------------|---|----|---------|-----|-------------|---------|
|  |            |   |    |         |     |             |         |
| <b>Technology group</b>                                      | <b>ADG</b> | <b>12.000 PLN</b><br>9.756 PLN              | O  | O       | O   | O           | O       |
| <b>Blacktop Package</b>                                      | <b>ADX</b> | <b>5.000 PLN</b><br>4.065 PLN               | O  | O       | O   | O           | -       |
| <b>Alpine Audio Group</b><br>9 Speakers - 506-Watt Amplifier | <b>AA5</b> | <b>8.000 PLN</b><br>6.504 PLN               | O  | O       | O   | O           | O       |
| <b>Harman Kardon Audio Group</b><br>19 speakers              | <b>AY1</b> | <b>13.000 PLN</b><br>10.569 PLN             | -  | -       | O   | O           | O       |
| <b>Sunroof</b>   | <b>GWA</b> | <b>10.000 PLN</b><br>8.130 PLN              | O  | O       | O   | O           | -       |
| <b>Sunroof</b><br>for Hellcat                                | <b>GWA</b> | <b>14.000 PLN</b><br>11.382 PLN             | -  | -       | -   | -           | O       |
| <b>Natura Leather</b>  | <b>-</b>   | <b>0 PLN</b><br>0 PLN                       | -  | -       | -   | -           | S       |
| <b>Alcantara Leather</b>                                     | <b>ALR</b> | <b>5.000 PLN</b><br>4.065 PLN               | -  | -       | -   | -           | O       |
| <b>Red Seat Belts</b>  | <b>CGQ</b> | <b>2.000 PLN</b><br>1.626 PLN               | -  | -       | -   | O           | O       |
| <b>Seats color: black</b>                                    | <b>-X9</b> | <b>0 PLN</b><br>0 PLN                       | S  | S       | S   | S           | S       |
| <b>Seats color: red</b>                                      | <b>-X6</b> | <b>0 PLN</b><br>0 PLN                       | -  | -       | -   | -           | O       |
| <b>Seats color: sepia</b>                                    | <b>-VX</b> | <b>0 PLN</b><br>0 PLN                       | -  | -       | -   | -           | O       |

S = standard equipment, O = optional equipment, - = not available

## Dodge Charger – Option prices 2/2

| Option                                | Sales Code | Rec. Retail Price        | GT | SXT AWD | R/T | R/T DAYOTNA | HELLCAT |
|---------------------------------------|------------|--------------------------|----|---------|-----|-------------|---------|
|                                       |            | Incl. VAT<br>Excl. VAT   |    |         |     |             |         |
| Red Brake Calipers                    | XSP        | 4.000 PLN<br>3.252 PLN   | O  | -       | O   | -           | S       |
| Black Brake Calipers                  | XS9        | 4.000 PLN<br>3.252 PLN   | -  | -       | -   | -           | O       |
| Orange Brake Calipers                 | XTU        | 4.000 PLN<br>3.252 PLN   | -  | -       | -   | -           | O       |
| Gunmetal Brake Calipers               | XTM        | 4.000 PLN<br>3.252 PLN   | -  | -       | -   | -           | O       |
| Black Painted Roof                    | MXS        | 11.000 PLN<br>8.943 PLN  | -  | -       | -   | -           | O       |
| Dual Carbon Stripes                   | M96        | 8.000 PLN<br>6.504 PLN   | -  | -       | -   | -           | O       |
| Black Satin Hood                      | MYZ        | 14.000 PLN<br>11.382 PLN | -  | -       | -   | -           | O       |
| Cargo net                             | CKR        | 1.000 PLN<br>813 PLN     | O  | O       | O   | O           | O       |
| Engine Block Heater                   | NHK        | 2.000 PLN<br>1.626 PLN   | O  | O       | O   | O           | O       |
| 20x9.5 Low-Gloss Blk Forged Wheels    | WH3        | 8.000 PLN<br>6.504 PLN   | -  | -       | -   | -           | O       |
| 20x9.5 Dark Bronze Forged Alum Wheels | WRJ        | 9.000 PLN<br>7.317 PLN   | -  | -       | -   | -           | O       |

S = standard equipment, O = optional equipment, - = not available



## Dodge Charger – Body color

| Body colors               | Sales Code | Rec. Retail Price<br>Incl. VAT<br>Excl. VAT | GT | SXT AWD | R/T | R/T DAYOTNA | HELLCAT |
|---------------------------|------------|---|----|---------|-----|-------------|---------|
|                           |            |   |    |         |     |             |         |
| White knuckle             | PW7        | 0 PLN                                       | ○  | ○       | ○   | ○           | ○       |
| Pitch black clear coat    | PX8        | 0 PLN                                       |    |         |     |             |         |
| Go mango                  | PVP        |   |    |         |     |             |         |
| Maximum steel             | PAR        |   |    |         |     |             |         |
| TorRed                    | PR4        |   |    |         |     |             |         |
| Indigo blue               | PBM        |   |    |         |     |             |         |
| F8 green                  | PFQ        | 3.000 PLN<br>2.439 PLN                      | ○  | ○       | ○   | ○           | ○       |
| B5 Blue pearl coat        | PQD        |   |    |         |     |             |         |
| Destroyer grey clear coat | PDN        |   |    |         |     |             |         |
| Triple nickel clear coat  | PSE        |   |    |         |     |             |         |
| Sublime pearl coat        | PFB        |   |    |         |     |             |         |
| Granite pearl coat        | PAU        |   |    |         |     |             |         |
| Octane pearl coat         | PRV        | 5.000 PLN<br>4.065 PLN                      | ○  | ○       | ○   | ○           | ○       |
| Plum crazy pearl coat     | PHG        |   |    |         |     |             |         |



Pitch Black – PX8



Granite – PAU



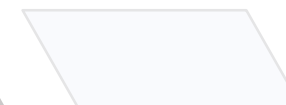
Maximum Steel – PAR



Destroyer Grey – PDN



Triple Nickel – PSE



White knuckle – PW7



Plum crazy - PGH



Sublime – PFB



F8 green – PFQ



Octane Red – PRV



TorRed – PR4



Go mango – PVP



Indigo blue – PBM



B5 blue - PQD

## Dodge Charger – Standard specification

| Standard specification                 | Sales Code | GT | SXT AWD | R/T | R/T DAYOTNA | HELLCAT |
|--|------------|----|---------|-----|-------------|---------|
| Plus package                           | AAY        | S  | S       | S   | S           | S       |
| Driver convenience group               | AJV        | S  | S       | S   | S           | S       |
| 8.4-inch Uconnect 4 with NAV           | UAQ        | S  | S       | S   | S           | S       |
| Ventilated seat                        | CAJ        | S  | S       | S   | S           | S       |
| Blindspot                              | XAN        | S  | S       | S   | S           | S       |
| Parksense rear assist                  | XAA        | S  | S       | S   | S           | S       |
| Power Tilt/Telescope Steering Column   | SUB        | S  | S       | S   | S           | -       |
| Premium Laguna leather door trim panel | CBF        | -  | -       | -   | -           | S       |
| 6 Premium Alpine Speakers              | RCJ        | S  | S       | S   | S           | S       |
| 276 watt amplifier                     | RD7        | S  | S       | S   | S           | S       |
| Heated steering wheel                  | NHS        | S  | S       | S   | S           | S       |
| Front fog lamps                        | LNJ        | S  | S       | S   | S           | S       |
| Heated Front Seats                     | JPM        | S  | S       | S   | S           | S       |
| Power 6-Way Driver Seat                | JPS        | S  | S       | S   | S           | S       |
| Power 4-Way Driver Lumbar Adjust       | JPU        | S  | S       | S   | S           | S       |
| Air Cond ATC w/Dual Zone Control       | HAF        | S  | S       | S   | S           | S       |
| Remote start system                    | XBM        | S  | S       | S   | S           | S       |
| Security alarm                         | LSA        | -  | S       | S   | S           | S       |
| Automatic headlamps                    | LMG        | S  | S       | S   | S           | S       |
| Google Android Auto                    | RF5        | S  | S       | S   | S           | S       |
| Apple CarPlay                          | RFP        | S  | S       | S   | S           | S       |
| Competition suspension                 | SDK        | -  | -       | -   | -           | S       |

S = standard equipment, O = optional equipment, - = not available

## Dodge Charger – Body color



Indigo blue – PBM



F8 Green – PFQ



Go mango – PVP



Triple nickel clear coat – PSE



Destroyer grey clear coat – PDN



TorRed clear coat – PR3



White knuckle clear coat – PW7



Pitch black clear coat – PX8



Maximum steel metallic clear coat – PAR



Granite pearl coat – PAU



Plum Crazy pearl coat – PHG



B5 blue pearl coat – PQD



Octane red pearl coat - PRV



Sublime pearl coat – PFB



## Dodge Charger – Interior 1/5



SXT Interior  
Nappa leather sport seat  
Color: black  
Sales code: \*AP



## Dodge Charger – Interior 2/5



GT and R/T interior  
Nappa / Alcantara performance seat  
Color: black  
Sales code: \*CJ

## Dodge Charger – Interior 3/5



R/T Daytona interior  
Daytona logo Nappa / Alcantara seat  
Color: black  
Sales code: \*YL

## Dodge Charger – Interior 4/5



Hellcat interior  
Laguna leather  
Sales code: \*VW8

## Dodge Charger – Interior 5/5



Seats color: black  
Sales Code: -X9



Seats color: sepia, Material: Laguna leather  
Sales Code: -VX



Seats color: red, Material: Laguna leather  
Sales Code: -X6



Seats color: black, Material: Alcantara (sales code AJR)  
Sales Code: -X9



## Dodge Charger – Options 1/2



Blacktop package

Sales Code: ADX

Including: Black Noise Painted Wheels, black one piece performance spoiler, gloss black I/P cluster trim rings



Satin black painted hood

Sales code: MYZ



Gloss black painted roof

Sales code: MXS



Alcantara Package

Including: Alcantara wrapped steering wheel, alcantara seats with SRT logo



R/T Daytona edition

Sales code: R/T Daytona (ACD)

Including: Low gloss forged alu wheels, Daytona logo on dashboard, I/P and seat, carbonite interior accents, cold air intake system, black one piece performance spoiler



Dual carbon stripes

Sales code: M96

## Dodge Charger – Options 2/2



Red seat belt  
Sales Code: CGQ



Engine block heater  
Sales code: NHK



Black brake calipers  
Sales code: XS9



Technology group  
Sales code: ADG  
Including: adaptive cruise control with stop, advanced brake assist, automatic high beam headlamp control, full speed forward collision warning plus, rain sensitive windshield wipers, lane departure warning



Plus package – driver convenience group  
Sales code: AAY – AJV  
Including: Driver's Auto-Dimming Exterior Mirror, Bi-Function HID Projector Headlamps, Blind-Spot, Power-Heated Mirrors w/Manual Fold-Away, Universal garage-door opener, heated front seat, heated second row seat, heated steering wheel, power front seat

## Dodge Charger – Wheels



SXT AWD  
19x7.5-inch Painted w/ dark pockets wheels  
Sales code: WS1



GT  
20x8.0-inch Satin Carbon Painted Wheels  
Sales code: WPZ



R/T  
20x8-inch Granite Crystal Aluminum Wheels  
Sales code: WHB



Hellcat Standard  
20x9.5-inch SRT LowGloss Black Perf Wheels  
Sales code: WEB



SXT AWD With Blacktop package  
19-Inch x 7.5-Inch Black Noise Painted Wheels  
Sales code: WS6



GT with blacktop package  
20x8-inch Black Noise Painted Wheels  
Sales code: WRE



R/T with blacktop package  
20x8-inch Black Noise Painted Wheels  
Sales code: WRE



Hellcat Option  
20x9.5-Inch Low-Gloss Black Forged Wheels  
Sales code: WH3



R/T Daytona  
20x9-inch Low gloss forged alum wheels  
Sales code: WRT



Hellcat Option  
20x9.5-Inch Dark Bronze Forged Alum Wheels  
Sales code: WRJ

## Dodge Charger – Exterior



Charger SRT Hellcat





\_\_\_\_\_

## Personalised equipment

# Index of order code

## 0-9

TN2 275/40ZR20 BSW Perf Tires  
CFU 2nd row fold/tumble captain chairs  
CVR 2nd row console w/armrest & storage  
TYS 305/35ZR20 (107Y) AS perf tyres  
RCJ 6 premium speakers  
UAQ 8.4-inch display with NAV

## A

SMC Adaptive Damping Suspension  
AJJ Alcantara leather package (Challenger)  
ALR Alcantara leather package (Charger)  
ATL Alpine Audio group (Challenger)  
AA5 Alpine Audio group (Charger)  
HAF Air Cond ATC w/Dual Zone Control  
LMG Automatic Headlamps

## B

ADX Blacktop package  
XS9 Black brake calipers  
MYW Black satin hood (Challenger)  
MYZ Black satin hood (Charger)  
XAN Blindspot monitoring system  
XS9 Brake Calipers - Black  
XSP Brake Calipers - Red  
AXM Brass monkey appearance package

## C

CKR Cargo net  
AZ2 Cargo plus group

## D

ACD Daytona package  
AJV Driver convenience group  
M96 Dual carbon stripes  
M2S Dual gunmetal center stripes

## E

NHK Engine Block Heater

## F

LNJ Front Fog Lamps

## H

JPM Heated Front Seats  
AMA Harman Kardon (Challenger)  
AY1 Harman Kardon (Charger)  
RCA Harman Kardon (Durango)

## L

AYK Laguna leather package  
XZU Launch Assist  
JEK Leather wrapped dashboard  
AMU Lightweight Performance Package

## G

XTM Gunmetal brake calipers

## O

XTU Orange brake calipers

## P

MEH Painted black satin graphics  
XAA ParkSense Rear Park Assist System  
XAC ParkView Rear Back-up Camera  
AAY Plus package  
JPU Power 4-Way Driver Lumbar Adjust  
JPS Power 6-Way Driver Seat  
GTN Power Mirrors, Fold-Away  
GU4 Power multi-function Fold away mirror  
SUB Power Tilt/Telescope Steering Column

## R

XSQ Real carbon fiber interior accents  
AEK Rear DVD entertainment system  
GNK Rear View Auto Dim Mirror  
GFA Rear Window Defroster  
XSP Red brake calipers  
CEJ Red seats  
CGQ Red seats belts  
GXD Remote Proximity Keyless Entry  
XBM Remote Start System  
MWE Roof rails black

## S

AZS Shaker package  
MXN SRT performance spoiler  
GWA Sunroof  
RH1 Single disc remote CD player

## T

ADG Technology group  
ALE T/A package  
AHX Trailer tow group IV

## S

AWD Super Track Pak  
CJ2 Supp. Side Curtain Frt/Rr Air Bags  
CJ1 Supplemental Frt Seat Side Air Bags

## U

XGD Universal Garage Door Opener

## V

CAJ Ventilated Front Seat

## W

AYL Widebody package  
SDN Widebody Competition Suspension  
MML Widebody Fender Flares

